



## IDM+/Informa TWS-FL and iQ+

2018 Training catalog\_Rev01





## IDM+/Informa Installation and Commissioning training

### Factory training

This training is provided as Factory Training at any of our regional facilities including Fairport New York, Belfast, Beaverton, Dubai and Beijing. Please refer to current Qualitrol Educational Services Factory Course Schedule or email us for regularly scheduled course dates and locations.

Email address: [training@qualitrolcorp.com](mailto:training@qualitrolcorp.com)

Note: Factory Training may include students from other projects/companies. If exclusive training is required, please contact the Qualitrol quote team as additional charges may apply depending on the number of participant. [quotes@qualitrolcorp.com](mailto:quotes@qualitrolcorp.com)

### Description

This four-day course for up to eight (8) students prepares maintenance and engineering personnel to install, test, configure, and operate the Qualitrol IDM+ Digital Fault Recorder and Informa Power Quality Recorder. Special emphasis is placed on achieving performance based objectives which include all the critical tasks required to set up, configure, commission and perform some basic operation on the system.

### Schedule overview

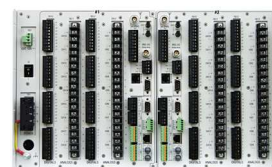
#### Day 1

Introduction  
Architecture of device vs schematics  
Time synchronization  
Communication Interfaces  
Web pages



#### Day 2

Device recovery  
Jumper settings configuration  
Firmware upgrade  
Calibration of analog inputs  
Data in device



#### Day 3

iQ+ installation  
Overview of different typed of recording  
Configuration of IDM+/Informa for Site Acceptance Test



#### Day 4

Inject input signals  
Retrieve and analyse data  
Validation of data  
Introduction to data analyst training



### Intended audience

Personnel who will install, maintain the IDM+/Informa system including installation, interconnection, calibration and basic configuration of the system.

### Prerequisites

General knowledge of power system fundamentals.  
Familiarity with Windows-based software programs.  
Knowledge of basic desktop PC usage.

### Qualitrol supplied materials

IDM+/Informa training system (*optional*)  
Hubs and Network Interconnection supplies (*optional*)  
Soft Copy Training Manuals

### Customer requirements for onsite training

PC with Windows 7/8/10 for each participant with rights to load software and change network address.  
Calibration source for each training system – Doble, OMICRON, ISA or equivalent.  
Training Room with Tables, Chairs, AC Power Outlets with a white board and a projector.



## Data Analyst training (Theoretical and practical)

---

### Factory training

This training is provided as Factory Training at any of our regional facilities including Fairport New York, Belfast, Beaverton, Dubai and Beijing. Please refer to current Qualitrol Educational Services Factory Course Schedule or email us for regularly scheduled course dates and locations.

Email address: [training@qualitrolcorp.com](mailto:training@qualitrolcorp.com)

Note: Factory Training may include students from other projects/companies. If exclusive training is required, please contact the Qualitrol quote team as additional charges may apply depending on the number of participant. [quotes@qualitrolcorp.com](mailto:quotes@qualitrolcorp.com).

### Description

This three-day course for up to eight (8) students prepares operations personnel to configure, and operate any Qualitrol Digital Fault Recorder/Power Quality Recorder and iQ+ software. Special emphasis is placed on achieving performance based objectives which include all the critical tasks required to set up, configure and operate the system.

### Schedule overview

#### Day 1

Introduction  
Hardware and webpages overview  
Explanation of wiring  
Data in device through:  
COMTRADE  
Modbus  
PMU  
IEC61850  
Deleting data from device  
Firmware upgrade



#### Day 2

iQ+ deployments  
Configuration of device according to customer requirement  
Collect data



#### Day 3

Analysis of data including Traveling wave analysis  
Record Analysis  
iQ+ notifications  
Housekeeping of iQ+ data

### Intended audience

Personnel who will operate and analyse data from the IDM+ Fault recorder/Informa Power Quality system including reporting, exporting data and configuration of the system.

### Prerequisites

General knowledge of power system fundamentals.  
Familiarity with Windows-based software programs.  
Knowledge of basic desktop PC usage.

### Qualitrol supplied materials

IDM+/Informa training system (*optional*)  
Hubs and Network Interconnection supplies (*optional*)  
Soft Copy Training Manuals

### Customer requirements for onsite training

PC with Windows 7/8/10 for each participant with rights to load software and change network address.  
Calibration source for each training system would be appreciated – Doble, OMICRON, ISA or equivalent.  
Training Room with Tables, Chairs, AC Power Outlets with a white board and a projector.



## Factory training

This training is provided as Factory Training at any of our regional facilities including Fairport New York, Belfast, Beaverton, Dubai and Beijing. Please refer to current Qualitrol Educational Services Factory Course Schedule or email us for regularly scheduled course dates and locations.

Email address: [training@qualitrolcorp.com](mailto:training@qualitrolcorp.com)

Note: Factory Training may include students from other projects/companies. If exclusive training is required, please contact the Qualitrol quote team as additional charges may apply depending on the number of participant. [quotes@qualitrolcorp.com](mailto:quotes@qualitrolcorp.com).

## Description

This three-day course for up to eight (8) students prepares maintenance and operations personnel to install, test, configure and operate any Qualitrol Fault Locator and iQ+ software. Special emphasis is placed on achieving performance based objectives which include all the critical tasks required to set up, commission, configure and operate the system.

## Schedule overview

### Day 1

- Basic of traveling wave
- Architecture of device vs schematics
- Time synchronisation
- Communication Interfaces
- Web pages
- Deleting data from device
- Firmware upgrade and device recovery



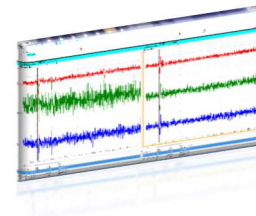
### Day 2

- iQ+ installation/deployments
- TWS-FL project management:
  - Breaker schemes
  - Installation of linear couplers
  - Measurement from CVT and bushing coupler
- Configuration of device according to customer requirement
- Data in device through IEC61850



### Day 3

- Inject input signals
- Collect data
- Traveling wave data analysis
- iQ+ notifications
- Housekeeping of iQ+ data



## Intended audience

Personnel who will install, operate and analyse data from Fault Locators system including installation, configuration (hardware and software) and reporting of the system.

## Prerequisites

- General knowledge of power system fundamentals.
- Familiarity with Windows-based software programs.
- Knowledge of basic desktop PC usage.

## Qualitrol supplied materials

- TWS-FL training system (*optional*)
- Hubs and Network Interconnection supplies (*optional*)
- Soft Copy Training Manuals

## Customer requirements for onsite training

- PC with Windows 7/8/10 for each participant with rights to load software and change network address.
- Pulse generator for each training system would be appreciated.
- Training Room with Tables, Chairs, AC Power Outlets with a white board and a projector.



---

## ***Educational Services Benefits (Onsite and factory Training)***

---

### **Less talk – more action**

- More action - all our courses focus on the practical side of the product. When your engineer or technician attends our courses, they will know how to configure the product to suit your particular needs and requirements. Why, because all courses are centered around hands-on experience.

---

### **Certified instructors**

- All QUALITROL instructors have been certified as experts in their product area. To become an expert, an instructor must successfully complete the QUALITROL product certification program designed around the particular product and have at least two years product experience. This is our guarantee that each instructor is fully technically qualified. To guarantee that our instructors are armed with the latest presentation skills, each instructor is specifically trained in course presentation methodologies.

---

### **Professionally developed courses**

- All courses are designed by professionals who have many years of field commissioning experience coupled with field proven learning methods. Our course designers have been there, in the field, with you, and know what must be learned and understood to ensure complete and practical product knowledge and capability.

---

### **We can bring the classroom to you**

- We bring factory training to your location. Because our courses are designed so tightly around hands-on training, QUALITROL can supply all the equipment assuring that each student gains the experience of equipment installation, configuration, calibration, and troubleshooting.

---

### **Educated customers**

- It is our philosophy that an educated customer is a long term customer. Our goal is to provide our customers the sense of security that comes from knowing that their personnel have full product understanding.
-